

Birmingham
Health and Wellbeing

Public Health and Housing: Local Leadership for Health Improvement

Thursday 20th January 2011
Saffron Centre, Moseley



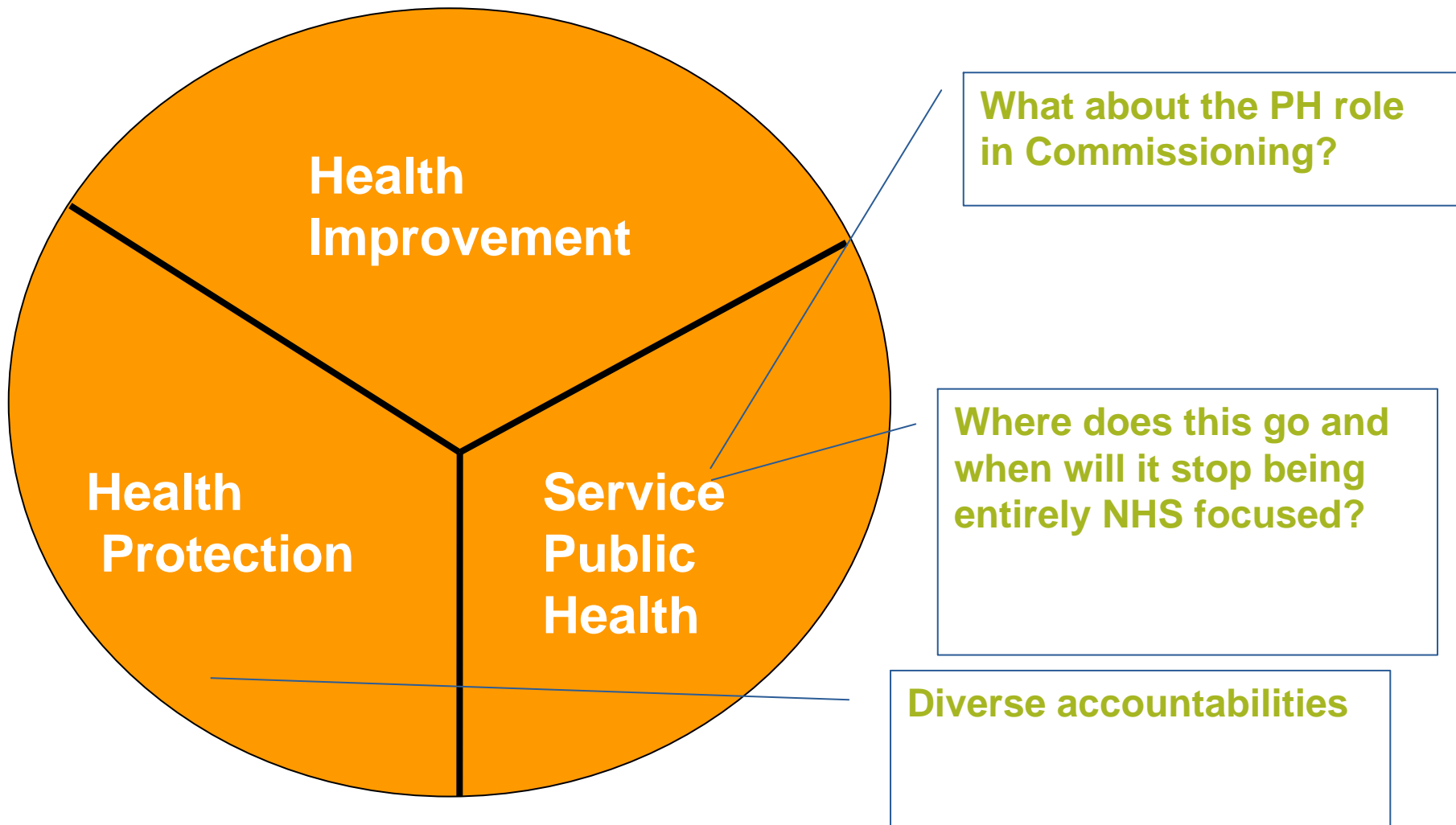


What does Public Health mean in the local authority?

Jim McManus

Joint Director of Public Health
Birmingham City Council





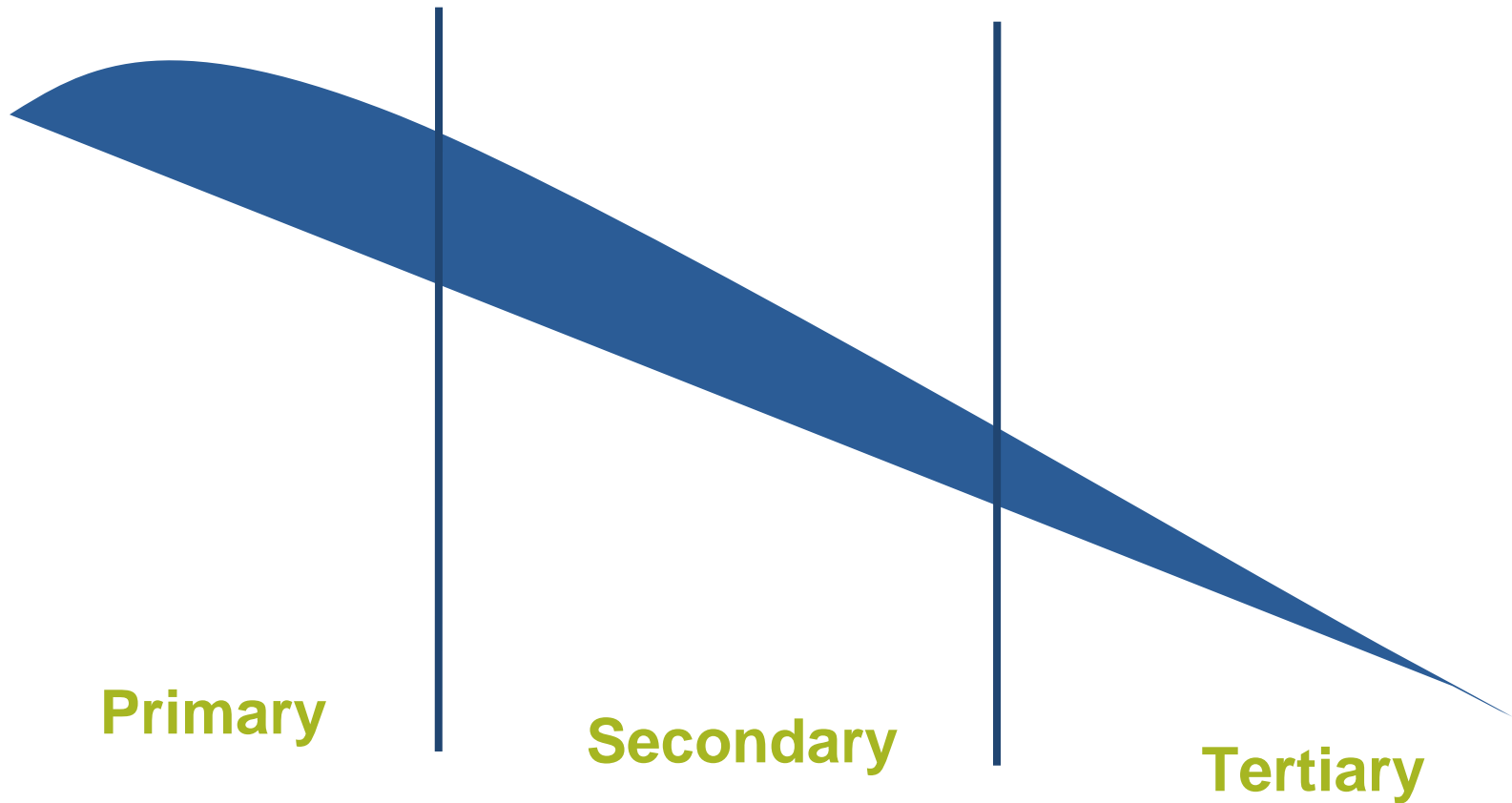
Some History

- **Public Health Acts 1836 and 36 subsequently**
- **Public Health into NHS in 1974**
- **LA Public Health Movement since**
- **Environmental Health**
- **Promotion of Health 1984 Act**
- **Range of Public Health Functions endured in LA:**
 - Communicable disease
 - Social care
 - Housing
 - Waste disposal, sewage, waste collection
- **Marmott !**

So what does it mean?

- **Doing the core business of the Local Authority in a way which**
 - improves the health of the population
 - Reduces inequalities in health caused or acted on by social determinants

Our Burdens of Disease



The Challenge

- We are doing tertiary prevention first because of where we are epidemiologically
- Understand which levers pull short, medium and long term

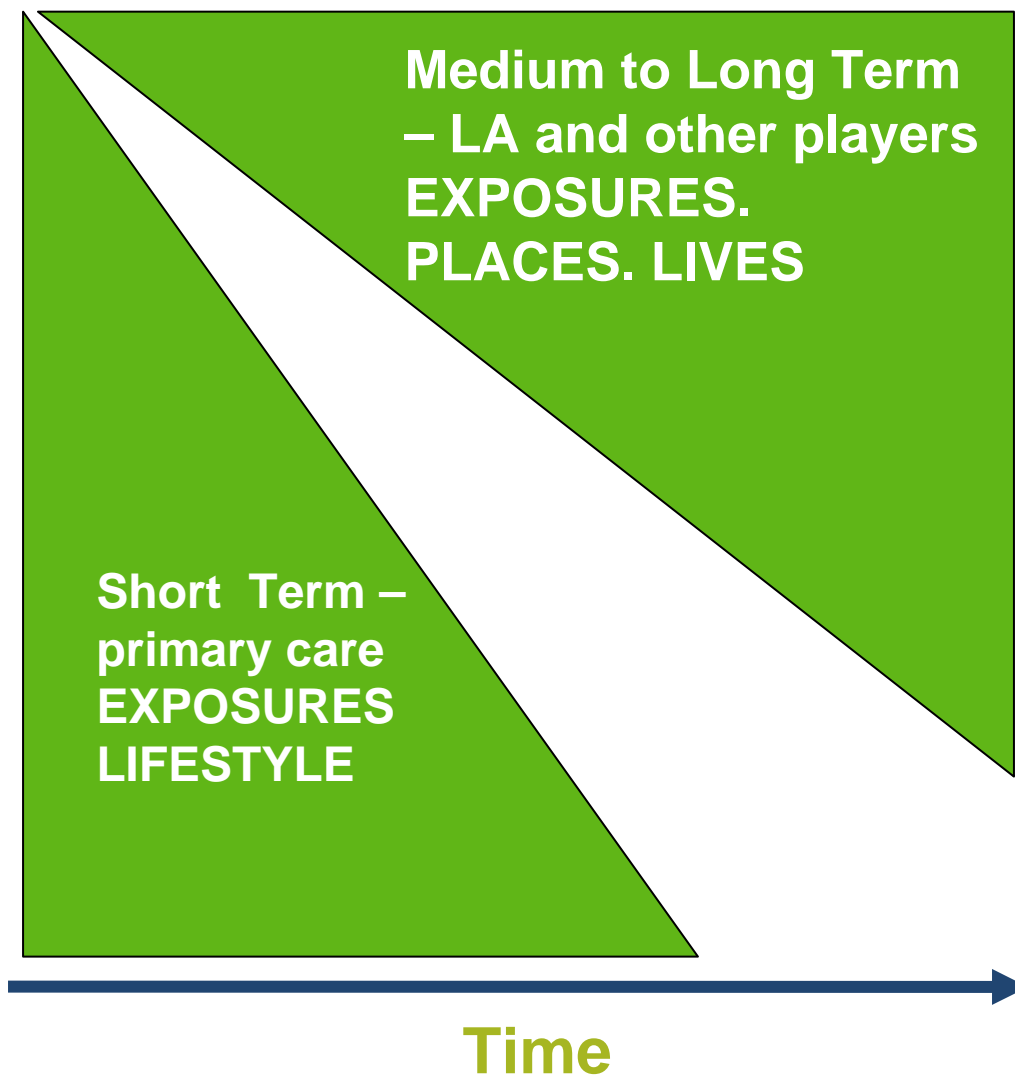


Figure 1

The causes of health inequalities



Source: National Audit Office literature review

So what is our approach since 2008/9?

- **Policy Commitment**
 - The Council Plan
- **An assessment of work and priorities across the council**
- **Each service area playing its part**
- **Corporate areas playing their part**
- **Scrutiny of Delivery**

Each Service Area Playing its Part

- **Regulatory services – workplace health and also nutrition through food outlets serving food to people in low paid/deprived areas (the healthy food sales awards) and work on young people and tobacco/alcohol**
- **Housing and Health**
- **Adult Social Care and Health including our strong work on prevention and integration between health and social care**
- **Childrens' JSNA and helping to reshape commissioning and the work they are doing on emotional development**
- **Worklessness and health, work just starting**
- **The Core Strategy including clear commitments on health**

Each Service Area Playing its Part

- **Regulatory services – workplace health and also nutrition through food outlets serving food to people in low paid/deprived areas (the healthy food sales awards) and work on young people and tobacco/alcohol**
- **Housing and Health**
- **Adult Social Care and Health including our strong work on prevention and integration between health and social care**
- **Childrens' JSNA and helping to reshape commissioning and the work they are doing on emotional development**
- **Worklessness and health, work just starting**
- **The Core Strategy including clear commitments on health**

Corporate Area Playing its Part

- **Shaping the Place to reduce risk and exposure**
 - Protective Factors (Good Housing, Good Education, Good Economy, Decent Public Realm)
 - Vulnerability Factors
- **Be Healthy as a Key Priority (for our CORE business)**
- **Health of our staff as a key part of a corporate strategy for our human resources**

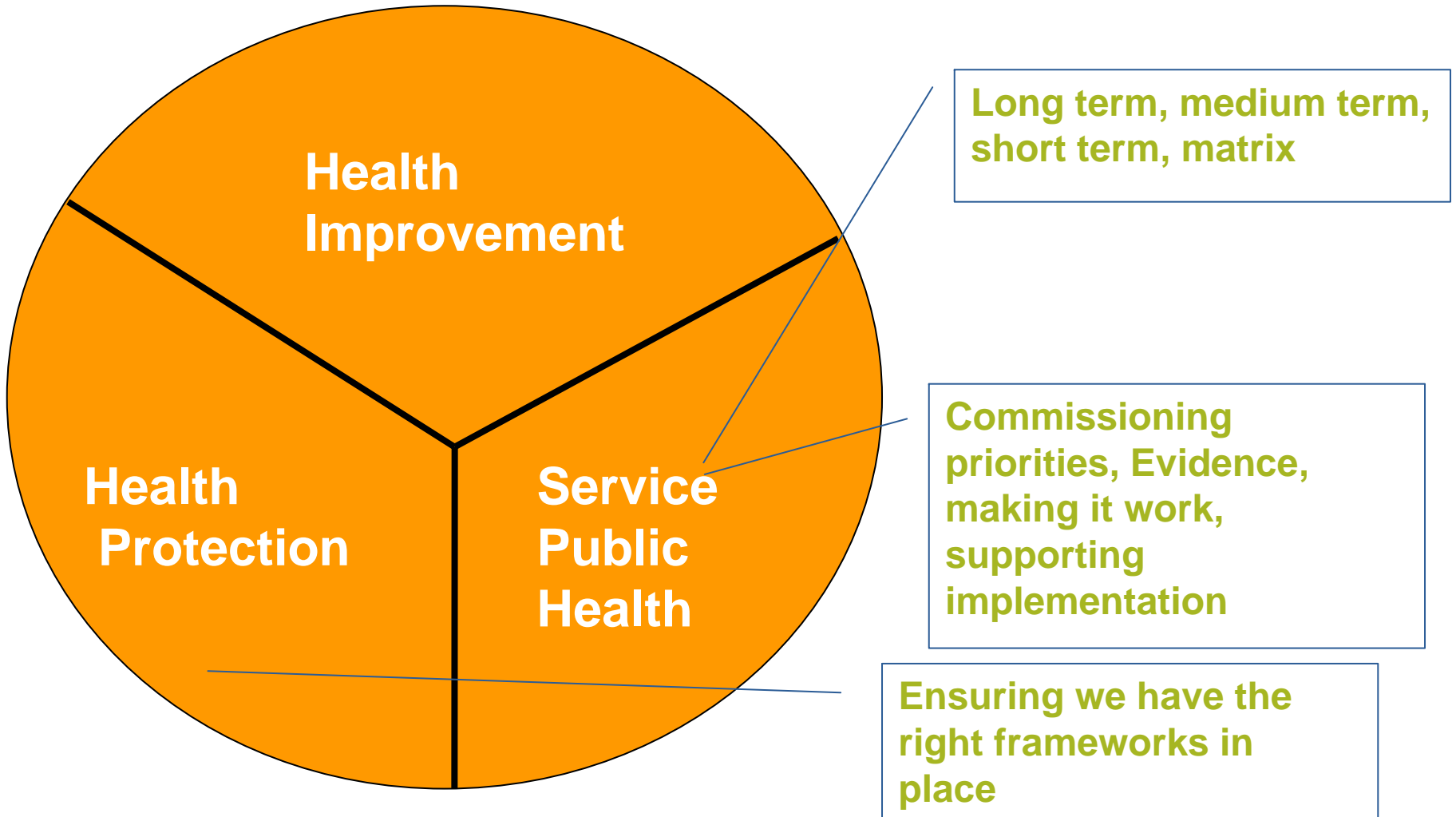
Local Government Public Health

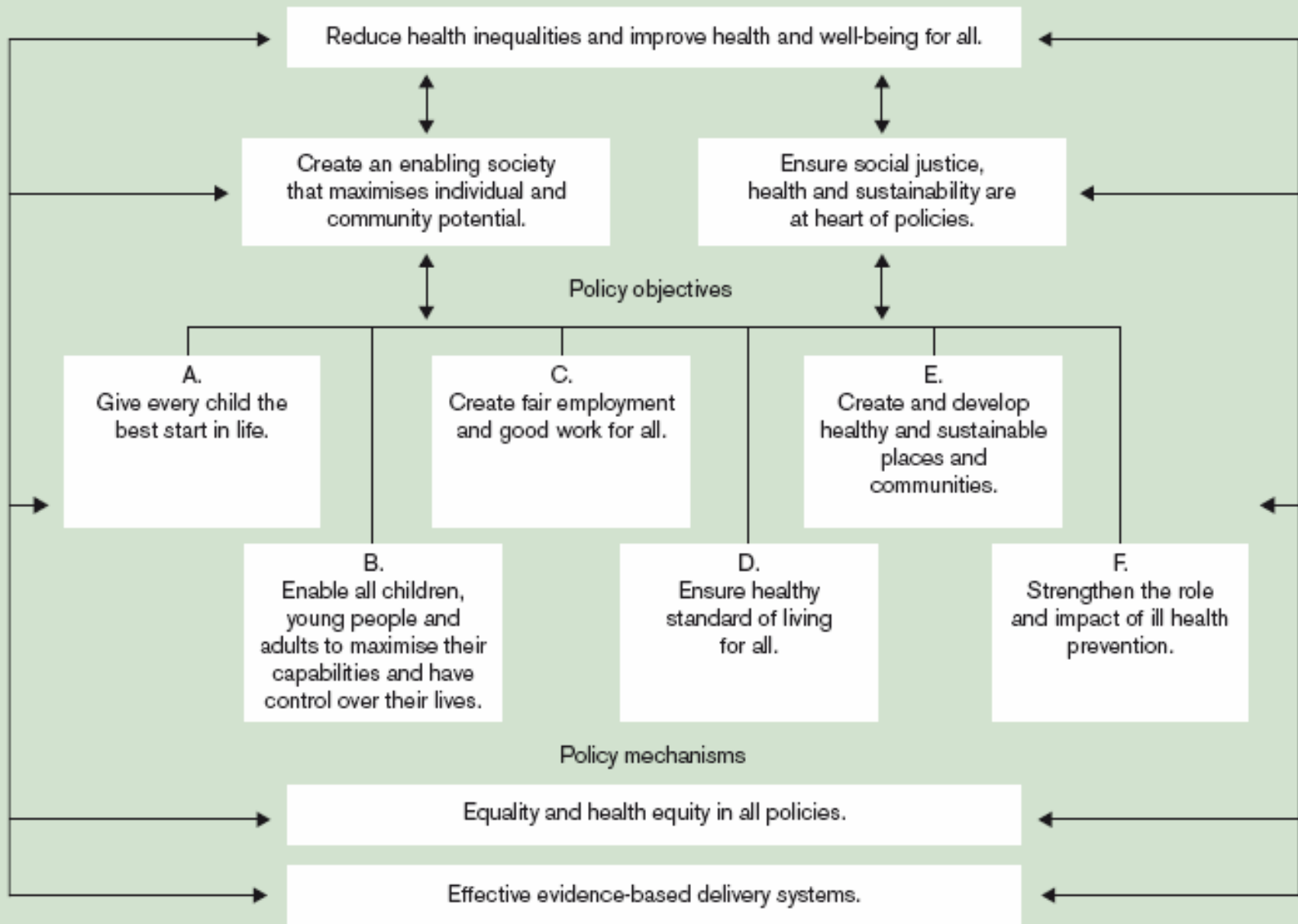
IS

- A portfolio of activities
- part of a Matrix
- About doing our Core Business in a Healthy Way
- About complex and strategic working
- About partnership
- About People, and Places, and Exposures

IS NOT

- A replacement for the NHS or good primary care
- Going to improve life expectancy tomorrow
- Lacking in Evidence
- Lacking in Implementation
- Always Short Term
- About shifting all energy from NHS to Local Authority services





Successes

- **Falls**
- **Decent Homes**
- **Dementia**
- **Educational Outcomes**
- **Personalisation**
- **Place Shaping**